

GloboFleet®

GloboFleet Downloadkey

User manual



EAN / GTIN 4260179020070

Content

Content / Overview	2
Read out tachograph data	3
Read out tachograph data and driver card	4
Transfer data to a computer	5
Format downloadkey	5
Read out mass store, VDO DTCO 1381	6
Read out mass store, Stoneridge SE5000	7
Read out mass store, Actia Smartach	8
Error message during download	9
Configuration tool for downloadkey	10

- 1 USB-port (PC)
- 2 Status-LEDs
- 3 Tachograph-connector



Attention:

Depending on the time period chosen the download of the mass storage from the digital tachograph may take a few hours! Please allow more time when downloading mass storage data.

Read out tachograph data

1. Place the company card into the digital tachograph and wait until the card has been registered.



2. Plug the downloadkey in the appropriate port of the tachograph (see page 6). Both LED's will flash for a short while to confirm functionality.
3. During the download the green LED will flash continuously. Wait till the LED stays solid green. The download is complete when the LED is solid green now you may remove the downloadkey and company card.

Attention:

Do not start your engine while the downloadkey is plugged into your tachograph an electrical surge may occur which could damage your downloadkey.

Read out tachograph data and driver card

1. Place the driver card in the left and the company card in the right slot of the tachograph and wait until the registration is complete with both cards



2. Plug the downloadkey in the appropriate port of the tachograph (see page 6). Both LEDs will flash briefly to confirm functionality.

3. During the download the green LED will flash continuously. Wait till the LED stays solid green. The download is complete when the LED is solid green. Now you may remove the downloadkey and company card.

Warning:

To read the driver card this feature must be enabled via the configuration software. (Refer to p.10)

Data transfer to Computer

Plug in the downloadkey in a free USB-Port on your computer. If GloboFleet CC Plus is installed on your system, the data stored on your downloadkey will be transferred to your computer automatically.

Alternatively you can download and save the data manually. The downloadkey will work as a normal USB-stick when connected to your computer.

Format downloadkey

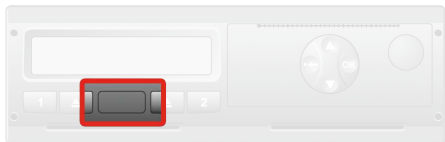
Start the configuration tool and click on „format downloadkey“. You can also format the downloadkey like a normal USB-stick on your computer: Right click on the symbol of the downloadkey in your file-manager and choose „format“.

You only need to format the downloadkey when no storage capacity is left. After you formatted the downloadkey remove it from your computer and plug it in the USB-port again.

Warning:

Do not connect the downloadkey simultaneously to a tachograph and a personal computer (USB extension cable)! This may cause considerable damage to the downloadkey.

Read out mass store – VDO DTCO 1381



To download data from the Siemens VDO DTCO 1381 find the interface behind the flap which is located between the two card slots.

Tap with your finger on the spot of the flap where you can see a small hole. After that the flap will open and you can see the interface. Plug in the downloadkey in the port.

The download will only start if a company card, control card or a work shop card is installed in your tachograph. Close the flap after the download has finished.

Read out mass store – Stoneridge SE5000



To download data from Stoneridge SE 5000 find the interface on the left side behind the paper tray. Remove the paper tray to gain access to the interface.

After you have removed the paper tray you will see the interface to connect the downloadkey on the left bottom side in the the paper tray.

The download will only start if a company card, control card or a work shop card is installed in your tachograph. Return the paper tray and close the flap after the download has finished.

Read out mass store – Actia SmarTach



The Actia SmarTach download interface is located on the right hand side next to the display under a flap.

Please open this flap to get access to the download interface so you can download from the mass storage.

The download will only start if a company card, control card or a work shop card is installed in your tachograph.

Error message during download

Some older software versions used in digital tachographs may possibly show the following error messages:

✘⚠ Download Fault

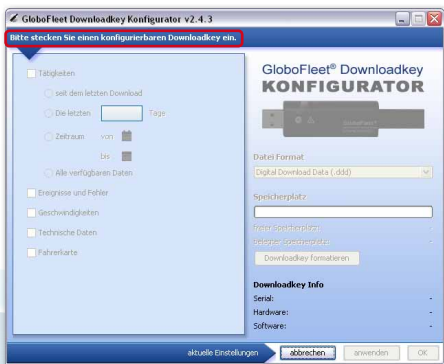
Please confirm this message by pressing the OK button on your tachograph.

Once the message is confirmed the download will continue automatically.

Downloadkey – Configuration-Tool

When delivered the GloboFleet downloadkey will download all of the data which has been stored since your last download by default.

The configuration tool allows you to configure the downloadkey depending on your needs. Install and start the configuration tool. You will then be asked to plug in your GloboFleet downloadkey.



With the GloboFleet Configuration Tool the following settings can be made on the downloadkey:

Download of activities - since the last download

- last XX days
- time period from XX to XX
- all available data

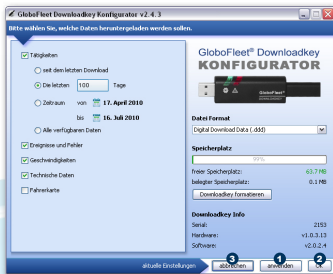
Download incidents and errors

Download speed data

Download technical data

Download activities

When pressing the „apply“ button **1** the settings will be saved in the downloadkey while the configuration tool remains opened. Press „ok“ **2** to save the settings in the downloadkey, the configuration tool will then close automatically. Press „cancel“ **3** to close the configuration tool without any changes.



Technical data:

1 X standard USB-port

1 X standard tachograph-connector

Store capacity: 64 MB (approx. 300 downloads)

Weight: approx. 26 g

Dimensions: approx. 112 X 24 X 11 mm (L X W X H)

Colour: black

GloboFleet

Swift Decision Ltd

82 Great North Road

AL9 5BL Hatfield

www.globofleet.co.uk



4260179020070